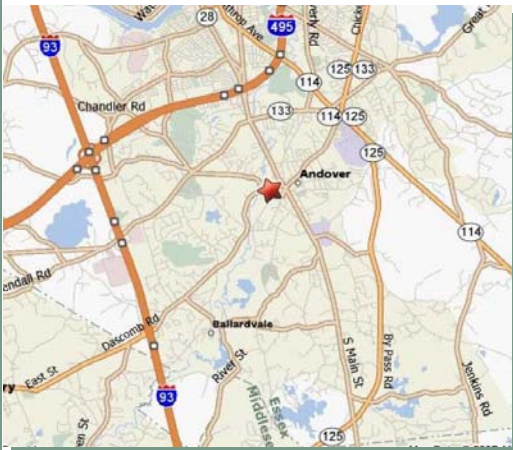
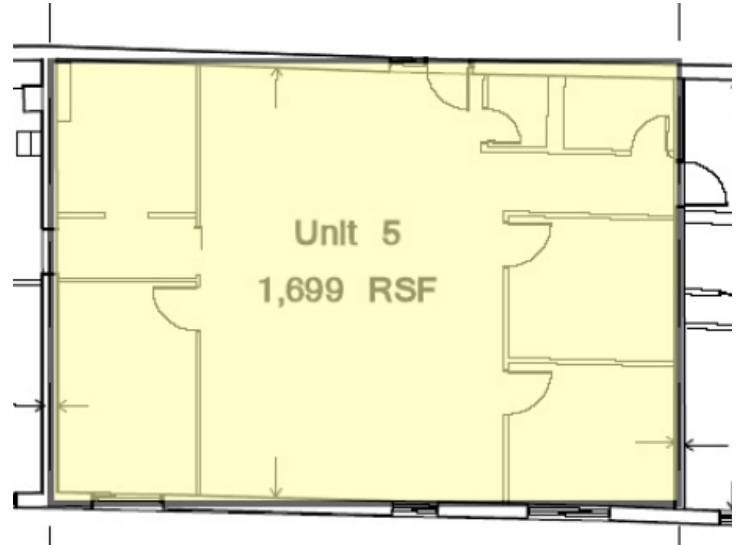




Dundee Office Park

Available as is, or custom-designed to your specifications

Building One, Suite 5_1,699 RSF



Location

- ◆ Excellent access to I-495 & I-93
- ◆ 25 miles to Boston and Logan Airport
- ◆ 34 miles to Manchester Airport
- ◆ Prestigious Andover address
- ◆ Walking distance to the commuter rail and Andover's unique downtown

Unique Features Benefits

- ◆ Classic post & beam architecture with exposed brick and oak detailing
- ◆ Oversized modern windows
- ◆ Free on-site parking
- ◆ On-site full service fitness center
- ◆ Commercial multi-use zoning and convenient loading access

*CONTACT US TODAY FOR MORE INFORMATION OR TO SCHEDULE A PERSONAL TOUR!
978.681.5004 x113 or 115 • www.ozzyproperties.com*