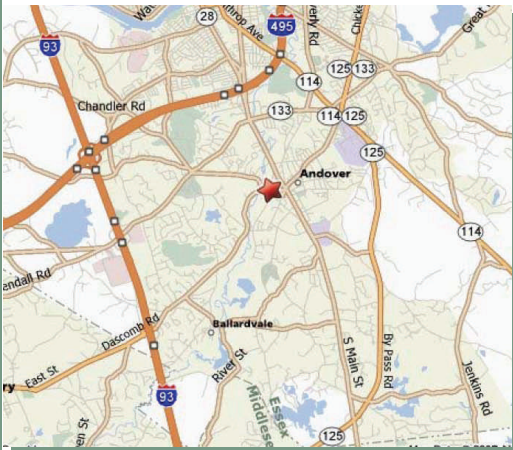
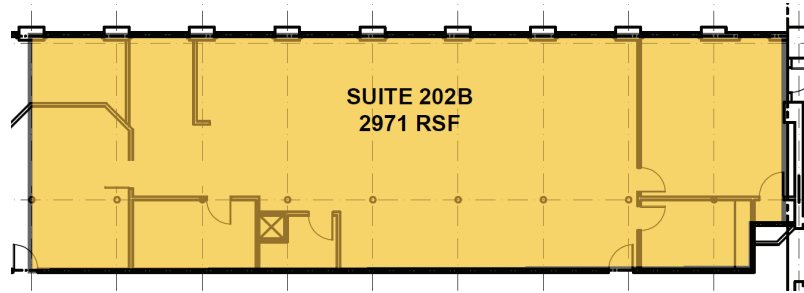




# Dundee Office Park

Available as is, or custom-designed to your specifications

**Building Three, Suite 202B**



## Location

- ◆ Excellent access to I-495 & I-93
- ◆ 25 miles to Boston and Logan Airport
- ◆ 34 miles to Manchester Airport
- ◆ Prestigious Andover address
- ◆ Walking distance to the commuter rail and Andover's unique downtown

## Unique Features Benefits

- ◆ Classic post & beam architecture with exposed brick and oak detailing
- ◆ Oversized modern windows
- ◆ Free on-site parking
- ◆ On-site full service fitness center
- ◆ Commercial multi-use zoning and convenient loading access

**CONTACT US TODAY FOR MORE INFORMATION OR TO SCHEDULE A PERSONAL TOUR!**  
**978.681.5004 x113 or 115 • [www.ozzyproperties.com](http://www.ozzyproperties.com)**